

Technology Driven Care Solution

At Your Fingertips



The Silent Crisis

- Chronic Conditions



Did you know?

70% of heart attacks in those
65+ years olds are preventable
with monitoring (AHA)

46%

of adults with hypertension
worldwide have never been
diagnosed (WHO)

70%

of cardiovascular diseases in adults over
65 are preventable through regular health
monitoring and lifestyle changes

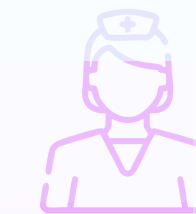
27%

of adults aged 65 and older
are treated for diabetes in
the U.S. (WHO)

Challenges



The global population aged 65+ is expected to double by 2050, leading to failed treatments and untimely deaths



90% of hospitals have reported operating at or above capacity during peak. WHO estimates a global shortage of 4.8 million nurses and midwives by 2030



Traditional in-person monitoring is costly and time-consuming, across geographies



Healthcare faces financial strain from rising medical costs



Remote areas lack infrastructure for patient monitoring



Challenges with wearable integration and data accuracy

Solution: Remote Monitoring

- Need of the hour

RPM uses IoT to capture data from wearable and implanted medical devices, enabling proactive, remote monitoring to improve patient outcomes and save lives.



- Addresses the rising Healthcare Demands particularly in Ageing population, chronic conditions
- Remote Efficiency: RPMS addresses gaps in underserved areas
- Assist to monitor and manage patients' health outside of traditional healthcare settings
- Reduces financial burden and quality resource crunch for continuous patient monitoring, and post-discharge care
- RPM enhances patient outcomes, reduces hospital readmissions, and supports proactive care

RPMS

By CareTechR

CareTechR aims to lead the healthcare industry by offering digital health tech for continuous remote monitoring.



IoT devices track vitals for chronic conditions and routine checks



Geo-fencing alerts for Alzheimer's and Parkinson's patients



Scheduled continuous or intermittent monitoring



Fall detection, position tracking, and sleep monitoring for elderly with chronic conditions

Key benefits:



Improved Outcomes



Reduced Readmissions



Proactive Care

How does it help you?

- Holistic, Tech-Driven Care

Comprehensive Monitoring

24/7 tracking of vitals with alerts

Home Monitoring

Blood pressure and telehealth devices

Data Integration

Seamless connection with EHR and AI analytics

Vitals Monitored

Heart rate, blood pressure, glucose, etc

Device Management

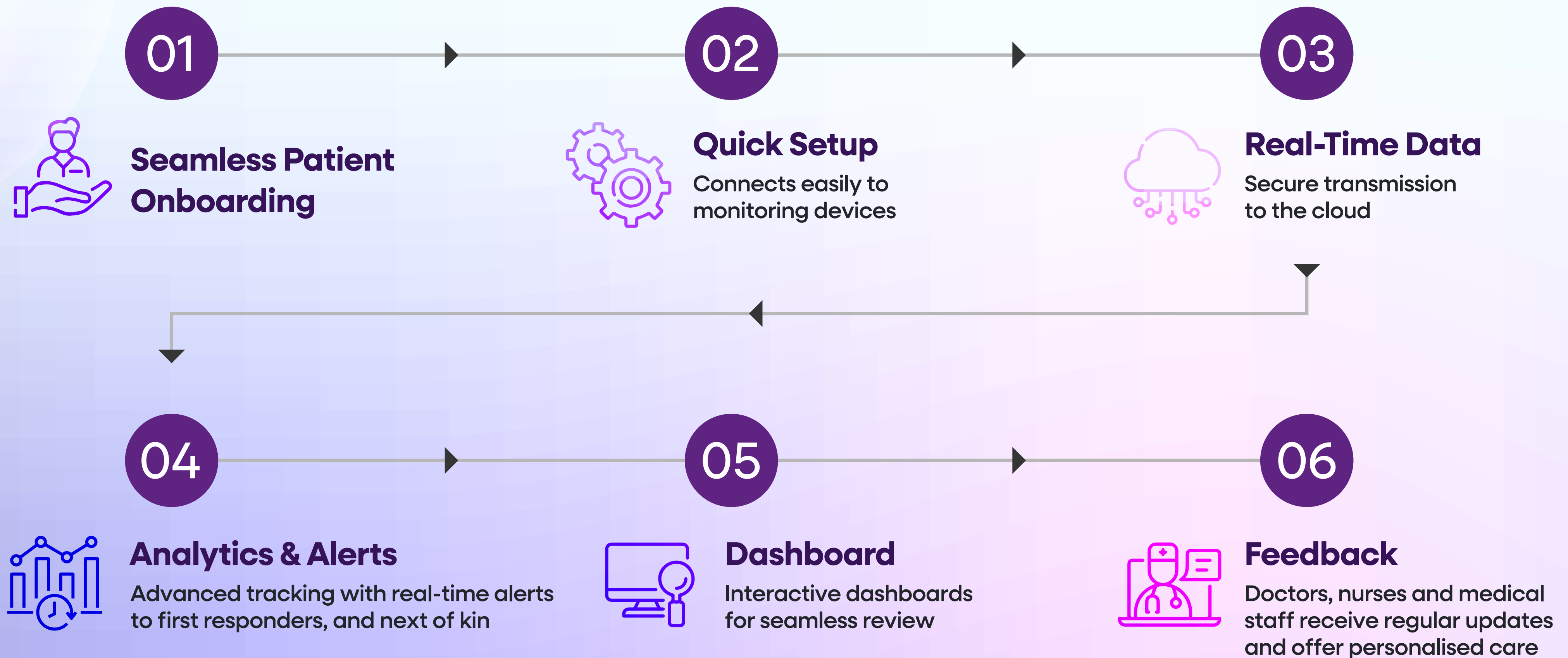
Simple pairing, troubleshooting, and updates

Reduced hospital readmissions

and bed occupancy through remote monitoring

Helpline/ Call centre	Monitoring conditions	Client	Client base
Doctor/Nurse/ Others (could be possible if needed)	Long term care <ul style="list-style-type: none"> • Post op care • Post pregnancy care • Geriatric care 	<ul style="list-style-type: none"> • Any age group • Women of reproductive age • Old age group 	Assisted living and home care to catchment area of Assisted living
	Palliative care <ul style="list-style-type: none"> • Oncology • Post CVA 	<ul style="list-style-type: none"> • Any age group • Any age group 	
	Lifestyle management <ul style="list-style-type: none"> • Cardiac2 • Chronic disease like Prediabetic and diabetic • Oncology 	<ul style="list-style-type: none"> • Any age group 	
	Antenatal, postnatal and newborn care	<ul style="list-style-type: none"> • Women of reproductive age • Newborn 	

Seamless implementation workflow, an innovative approach by CareTechR



Key Features & Functionality of CareTechR's RPMS

On-Demand Monitoring



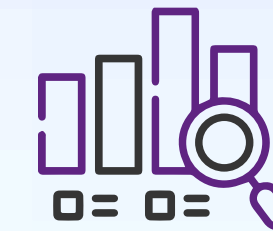
Cloud Storage

No data loss & storage issue



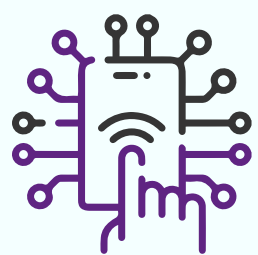
Automatic Alerts

Immediate alerts for timely intervention



Remote Observations

Patient vitals monitored remotely



Seamless Device Integration

Smooth connectivity across devices



Health Audit & Advice

Expert health advice by caregivers



Prioritised Visits

Data-driven home visits

Why CareTechR



Heartfelt Healing at Home

Providing home health, palliative, and personal care with a focus on dignity, independence, and quality of life



Smart Care, Smarter Savings

Continuous monitoring reduces costs, accelerates discharge, and optimizes bed availability



Symphony of Care

Balancing patient needs and caregiver support to offer psychological comfort



Tailored Touchpoints

Expertise in geriatric, pregnancy, post-operative, and newborn care with tech-enabled solutions



Masters of Care

Over the years of experience with professionals from private and public health sectors



Standards You Can Trust

HIPPA-compliant and HL7 FHIR integrated

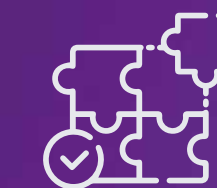
Core Values:



Passion



Commitment



Integrity



Compliance



Innovation



Talent










NexRing - Digital Smart Ring







6-in-1 Remote Health Monitor

Critical Benefits:

-  Analyses sleep patterns and HRV
-  Accurate data and analysis
-  Evaluates Quality of Sleep
-  Real-time SpO2 Detection
-  Research-Grade Sensors
-  Long Battery Life
-  Tailored size

Critical Benefits:

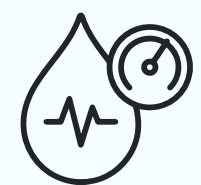
-  Monitors 6 Body Vitals (Oximetry, Heart Rate, Blood Pressure, Body Temperature, Blood Glucose, and ECG features)
-  Accurate and fast measurement
-  Compatibility with IOS and Android system
-  Software Development Kit Available

Why RPMS by CareTechR

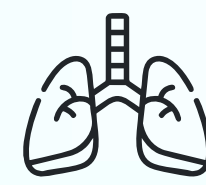
- Our One-stop Solution

Devices helps you
to help your patients

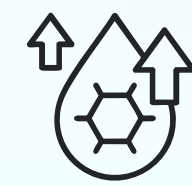
The vitals monitored by Caretechr's devices:



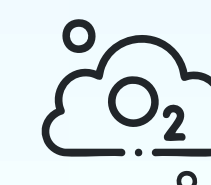
Blood Pressure



Respiratory Rate



Blood Glucose Levels



Oxygen saturation (SpO2)



Sleep Patterns



Body Temperature



Physical Activity Levels



Geo-fencing/location tracking
for alzheimer patients



Fall Detection



Heart Rate



Electrocardiogram (ECG)



Weight

Regulatory Compliance for CareTechR's RPMS

CareTechR provides country-specific devices that fully comply with local regulations and healthcare standards.

- Adheres to medical device regulations (Class IIa/IIb)
- Certified for quality (ISO 13485) and risk management (ISO 14971)
- Ensures clinical evaluation, safety, and ongoing post-market surveillance
- HIPPA and adheres to HL7 FHIR integration guidelines
- FDA Korea, CE, CDSCO
- GDPR compliant

Roles & Responsibilities in assisting better outcomes

Our ecosystem is designed to keep the patient at the centre while seamlessly connecting multi-level assistance verticals to ensure better outcomes.

Patients

Engage with devices
and follow protocols

Caregiver

Monitor data and provide
technical assistance



Doctors

Review data and plan
treatment accordingly

Organisation

Provide system
maintenance and training

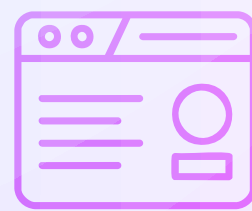
Bridging the Gap

CareTechR is the bridge between patients and caregiver using advanced technology. Our proprietary Remote Patient Monitoring (RPM) platform empowers caregivers to:

- Monitor patients in real-time using advanced, IoT-enabled devices
- Enhance patient care with continuous tracking of vitals and early detection of issues
- Improve response time during emergencies
- Improve efficiency and outcomes with proactive, data-driven insights
- Improve efficiency and outcomes with proactive, data-driven insights
- Alteration in treatment when required

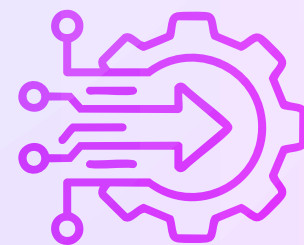
App Architecture of RPMS

By CareTechR



User Interface

A simple and intuitive AI-based design for seamless user experience



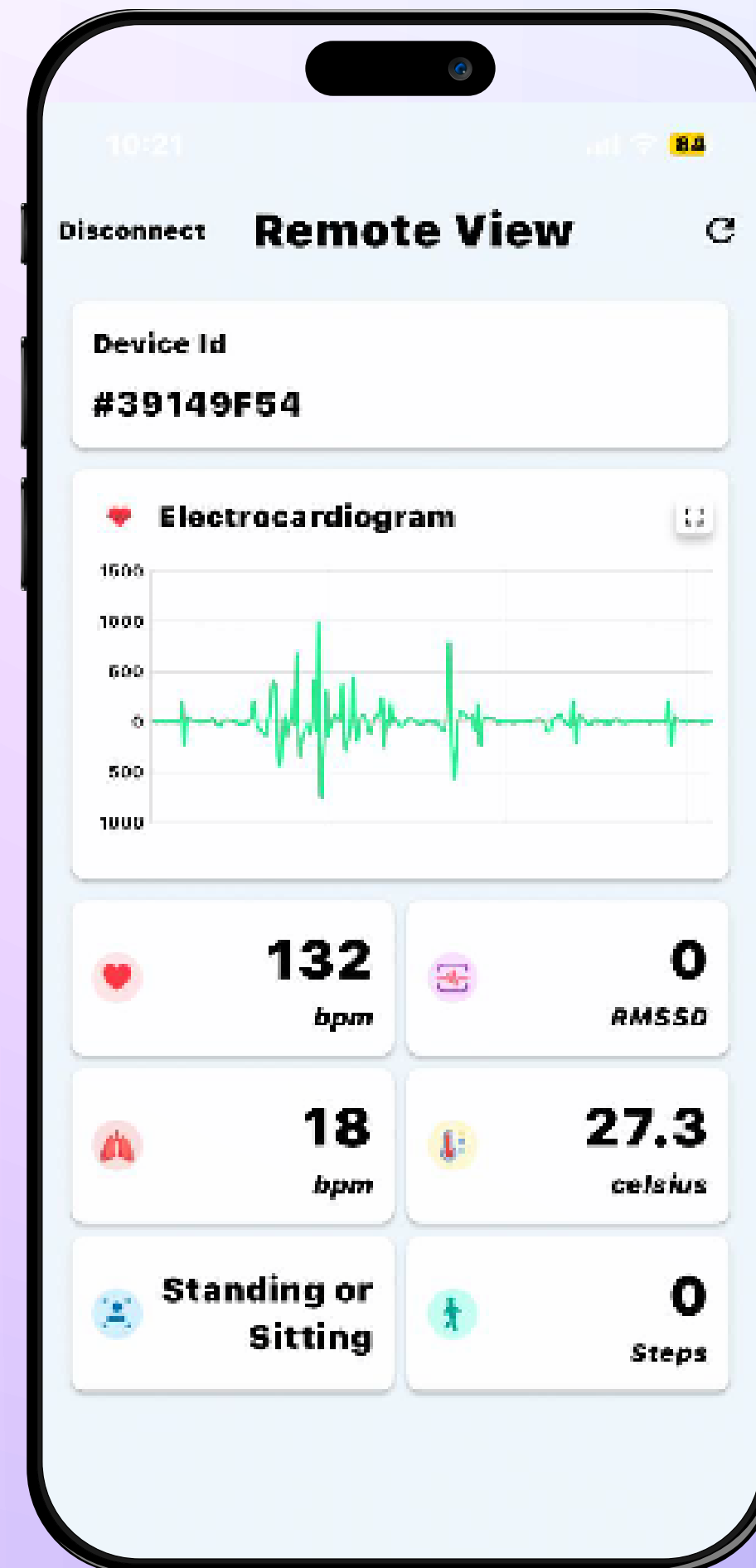
Integration

APR-driven EGR integration with HL7 FHIR standards



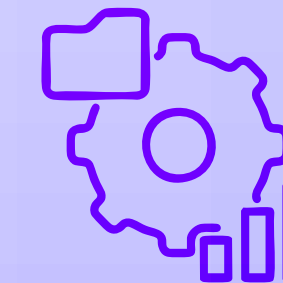
Communication

Real-time notifications and alerts with accurate readings



Data Management

Secure storage of patient data



Analytics Engine

AI-powered predictive insights on patient's health data





Plug & Play Model

Easily scalable solution, effortless addition of new users

Monitoring Capabilities & Device Integration

- Comparison of packages

Package	Basic Monitoring Package	Add-on Monitoring	Special Monitoring (for Specific Conditions)	
 <p>Captured Vitals</p>	<ul style="list-style-type: none"> • Skin temperature • Respiratory rate • R-R interval • HRV-SDNN • Posture 	<ul style="list-style-type: none"> • Heart rate • ECG 	<ul style="list-style-type: none"> • Blood oxygen • Heart rate • Time asleep • Respiratory rate • Wrist temperature 	<ul style="list-style-type: none"> • Cardiac events • Digital stethoscope • Wearable thermometer • Blood pressure • Blood glucose • Fall detection • Brain mapping • Sleep position • GPS
 <p>Monitored Conditions</p>	<ul style="list-style-type: none"> • Heart disease • Fever • Hypothermia • Bipolar disorder 	<ul style="list-style-type: none"> • Congenital heart defects • Type 2 diabetes • Hypertension • Liver disease • Kidney failure • Anemia 	<ul style="list-style-type: none"> • Hypertension • Diabetes • Fall detection • Alzheimer's disease 	

To explore further, schedule a demo, or start a pilot program, interested clients can reach out to us for a tailored consultation or learn more through our comprehensive resources.

We invite you to partner with us and help elevate your practice with efficiency, accuracy and better patient-recovery.

We assist caregivers with cutting-edge smart devices from a network of trusted vendors, integrating them seamlessly into your service.

Empower your practice and elevate patient care with RPMS—because the future of healthcare is proactive, connected, and within your reach today.

 sc@caretechr.com

 www.caretechr.com



PORTUGAL



INDIA



Caretechr-101518638791514



Care_TechR



care-techr-780a0b211



CareTechR